

Oberwiesstrasse 52

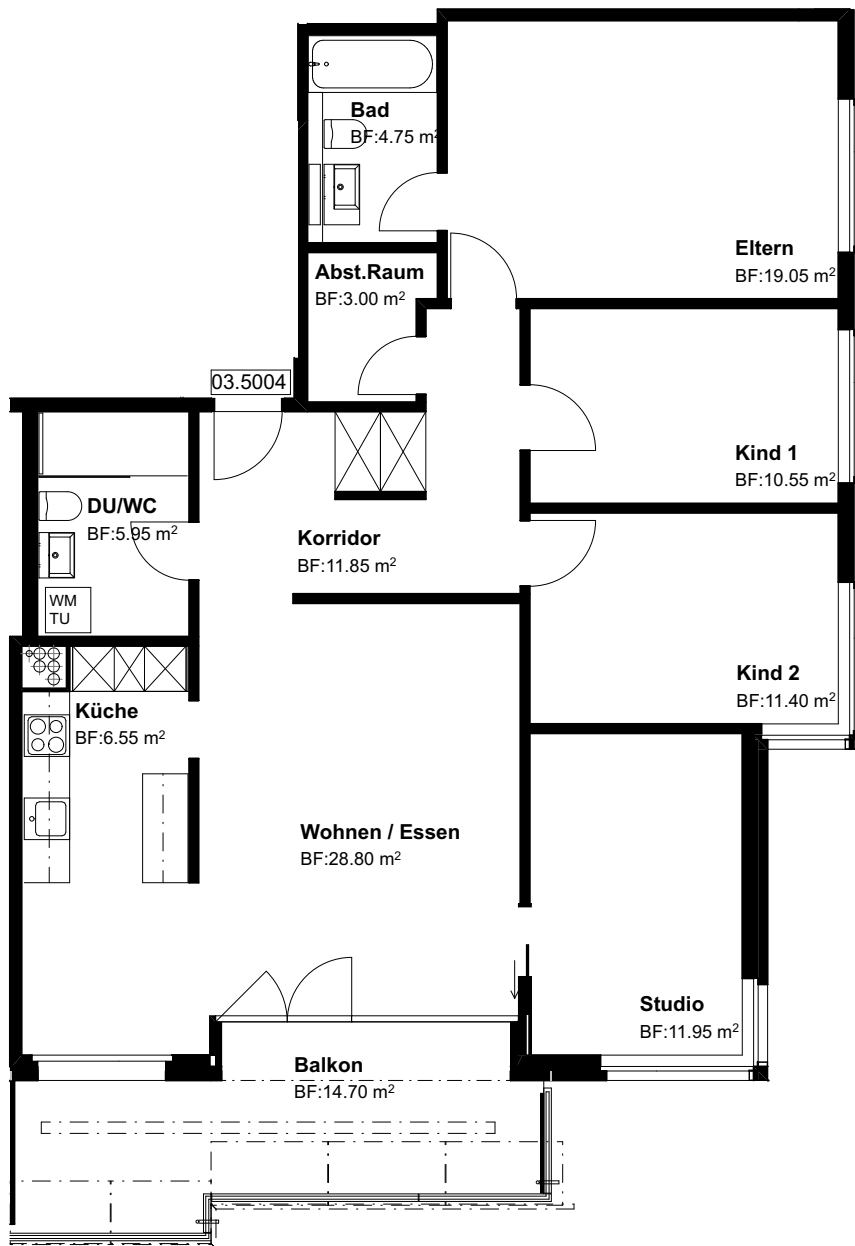
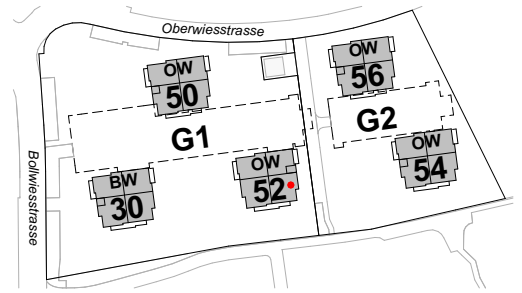
8645 Jona-Rapperswil

5.OG, 5.5 Zi-Whg

Nr. 03.5004

Fläche beheizt
Fläche unbeheizt
mit Lift

113.85 m²
14.70 m²



Grundriss Mst. 1:100

Änderungen bleiben vorbehalten

0 3m

